

Start talking to Zoning and Planning about possible business locations here at Step 1.

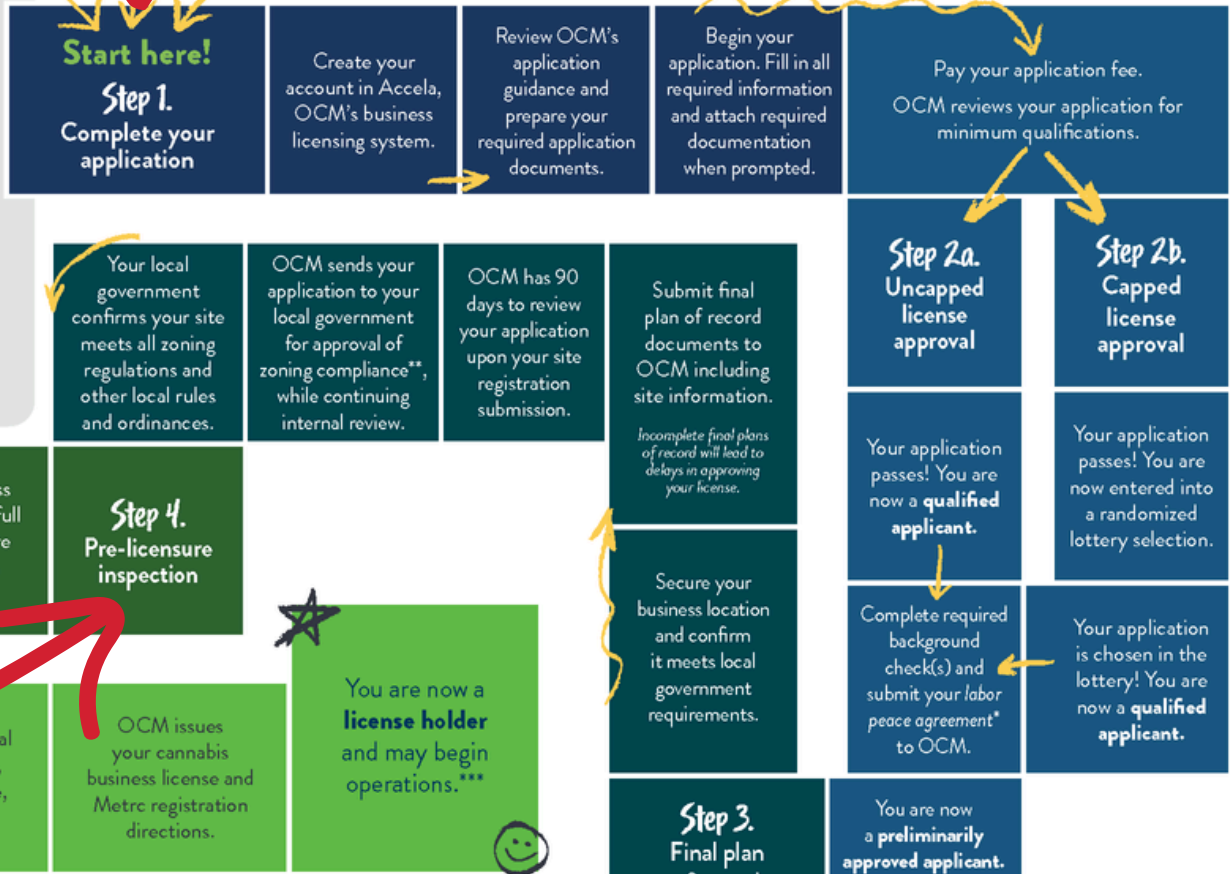


From Start to License: Your Path to Cannabis Licensing in Minnesota



Before you begin:

1. Were you verified as a social equity applicant? If so, decide if you will apply for a social equity-classified license.
2. What license type will you apply for? What endorsement(s) will you need to obtain?
3. Talk to your local government about zoning requirements and local retail registration availability (if applicable).



Submit your Cannabis Retail Application for the City of Brooklyn Center here just before Step 4.

* Microbusinesses are exempt from the labor peace agreement requirement until the point of renewal.
 ** Your application cannot proceed and your business cannot open until your local government certifies that your business meets zoning compliance, and, if applicable, fire code and building code.
 *** For those seeking to conduct retail activities, you must get retail registration from your local government directly (in addition to your license) before beginning cannabis sales. Local governments can issue local retail registration once you have preliminary license approval or have been issued a license from OCM.

PAUSE Complete the checklist for Step 3 on page 2 of this document before submitting your site registration.
 Note: Applicants have 18 months to complete Steps 3-5.

Receive approval from Zoning and Planning for the planned business site here at Step 3.